

ORACLE[®]

PRIMAVERA

New Features in Primavera Professional 15.2

COPYRIGHT & TRADEMARKS

Copyright © 2015, Oracle and/or its affiliates. All rights reserved.

Oracle is a registered trademark of Oracle Corporation and/or its affiliates. Other names may be trademarks of their respective owners.

This software and related documentation are provided under a license agreement containing restrictions on use and disclosure and are protected by intellectual property laws. Except as expressly permitted in your license agreement or allowed by law, you may not use, copy, reproduce, translate, broadcast, modify, license, transmit, distribute, exhibit, perform, publish or display any part, in any form, or by any means. Reverse engineering, disassembly, or decompilation of this software, unless required by law for interoperability, is prohibited.

The information contained herein is subject to change without notice and is not warranted to be error-free. If you find any errors, please report them to us in writing.

If this software or related documentation is delivered to the U.S. Government or anyone licensing it on behalf of the U.S. Government, the following notice is applicable:

U.S. GOVERNMENT RIGHTS

Programs, software, databases, and related documentation and technical data delivered to U.S. Government customers are “commercial computer software” or “commercial technical data” pursuant to the applicable Federal Acquisition Regulation and agency-specific supplemental regulations. As such, the use, duplication, disclosure, modification, and adaptation shall be subject to the restrictions and license terms set forth in the applicable Government contract, and, to the extent applicable by the terms of the Government contract, the additional rights set forth in FAR 52.227-19, Commercial Computer Software License (December 2007). Oracle USA, Inc., 500 Oracle Parkway, Redwood City, CA 94065.

This software is developed for general use in a variety of information management applications. It is not developed or intended for use in any inherently dangerous applications, including applications which may create a risk of personal injury. If you use this software in dangerous applications, then you shall be responsible to take all appropriate fail-safe, backup, redundancy and other measures to ensure the safe use of this software. Oracle Corporation and its affiliates disclaim any liability for any damages caused by use of this software in dangerous applications.

This software and documentation may provide access to or information on content, products and services from third parties. Oracle Corporation and its affiliates are not responsible for and expressly disclaim all warranties of any kind with respect to third party content, products and services. Oracle Corporation and its affiliates will not be responsible for any loss, costs, or damages incurred due to your access to or use of third party content, products or services.

NOTE: Duplication or distribution of this document without written permission from Oracle Corp. is prohibited.

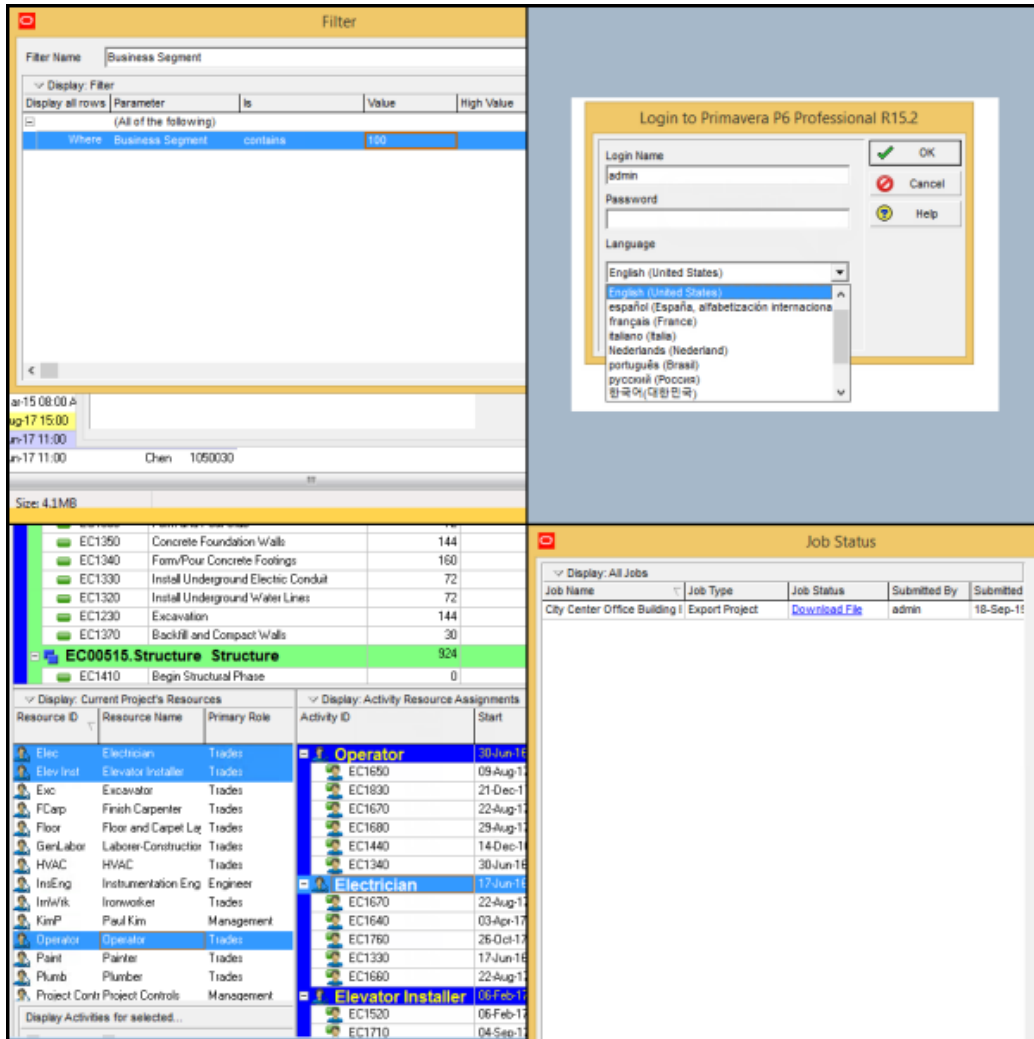
CONTENTS

- New Features in Primavera Professional 15.2.....1**
- Additional Filter Criteria for Codes2
- Export XML as a Job Service.....3
- Copy Projects as a Job Service.....4
- Save Resource Selection in the Resource Histogram and Spreadsheet.....5
- 64-Bit P6 Professional Installation.....6
- Microsoft Project XML 2013 Support7
- Select Language at Login8

New Features in Primavera Professional 15.2

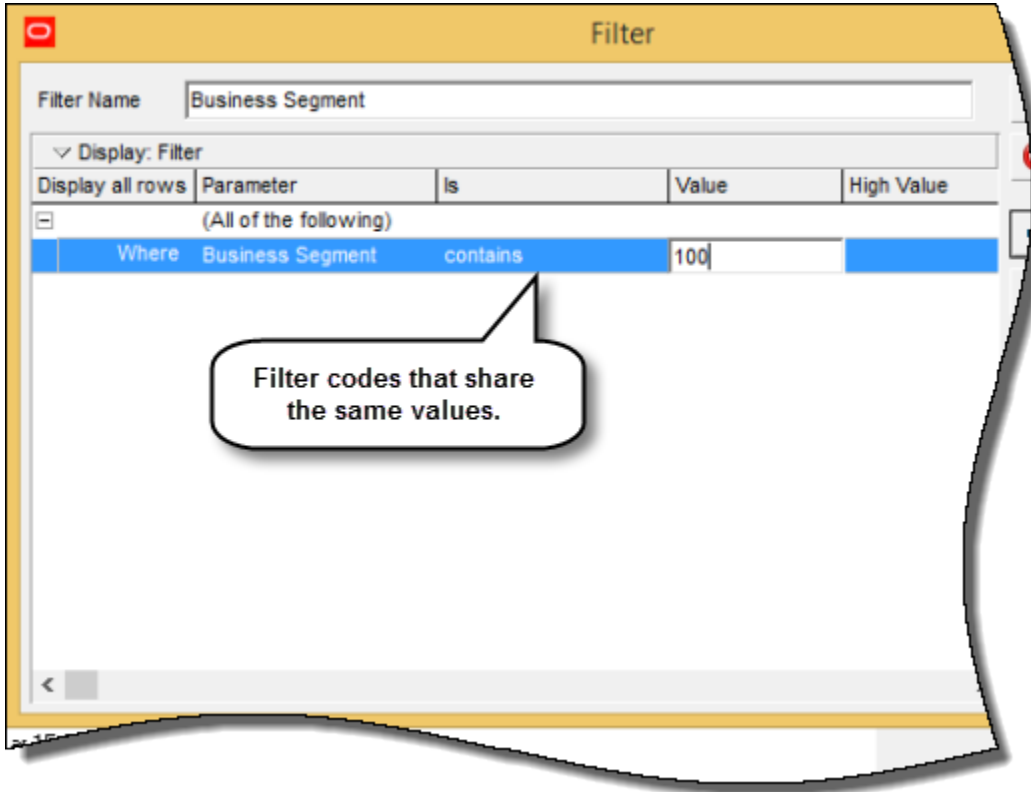
New features include:

- 64-bit P6 Professional installation.
- Additional Filter Criteria for Codes.
- Copy Project as a Job Service.
- Select Language at Login.



Additional Filter Criteria for Codes

P6 Professional 15.2 enables you to filter activity, project, and resource codes on two new criteria -- Contains and Does Not Contain. These options are useful when filtering codes that share some of the same numbers or characters in their values.

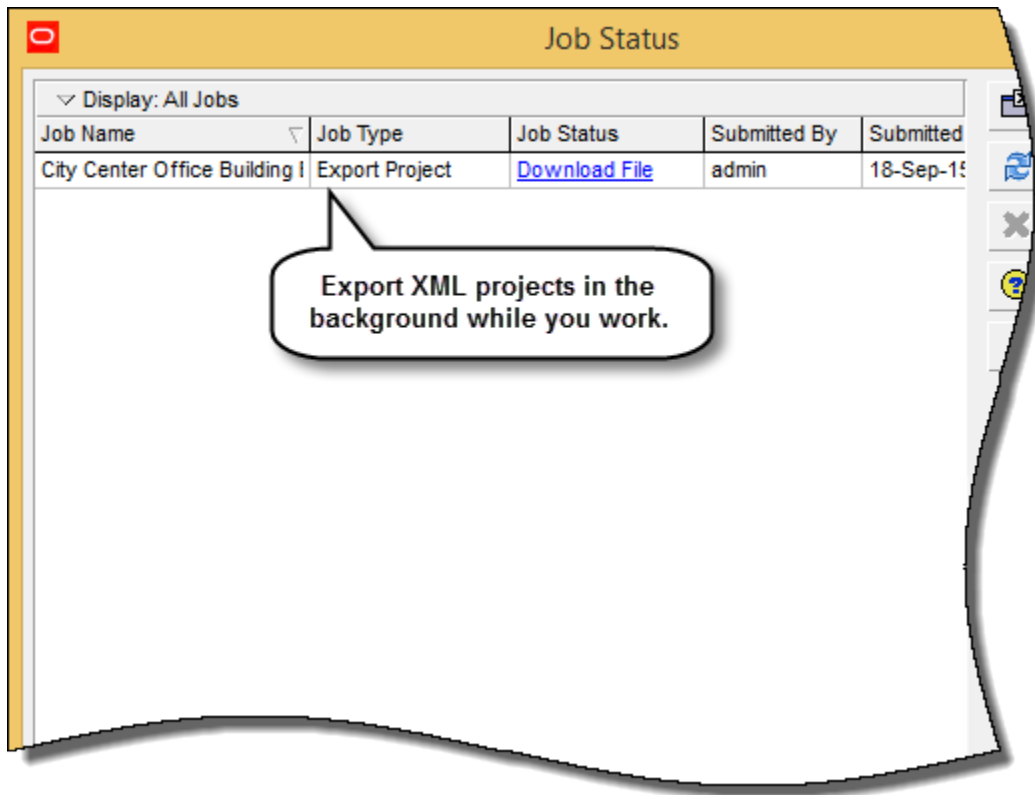


To access this feature:

Select a code in the Filter dialog box.

Export XML as a Job Service

Export projects in XML format as a job service, allowing you to continue working in P6 Professional while the service runs in the background. A notification displays when the service is completed. In the Job Status dialog box, click Download File to download the XML file. This functionality is not available in Standalone mode.

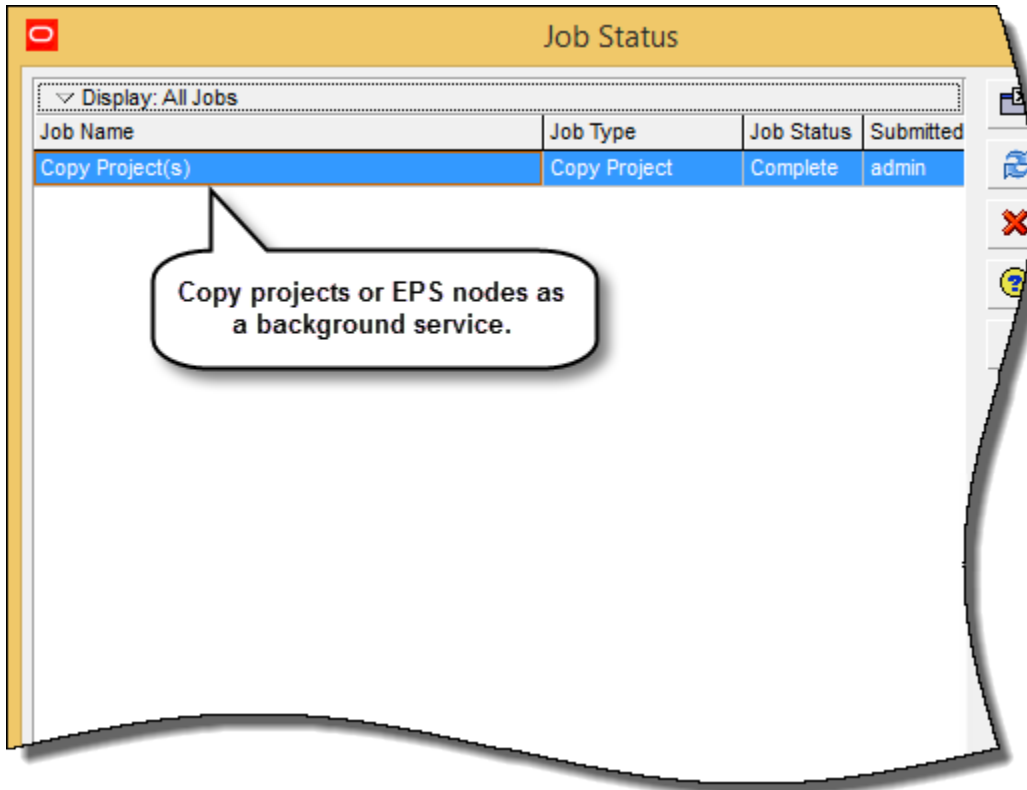


To access this feature:

On the File menu, click Export.

Copy Projects as a Job Service

P6 Professional 15.2 enables you to copy projects or EPS nodes as a job service, allowing you to continue working while the service runs in the background. A notification displays when the service is completed. View the status of the service in the Job Status dialog box. This feature requires connection to a P6 EPPM database.



To access this feature:

On the Projects page, select a project or EPS node, right-click and select Copy. Highlight a new location, right-click, and select Paste.

Save Resource Selection in the Resource Histogram and Spreadsheet

When you select resources in the Resource Histogram or Spreadsheet and then close P6 Professional, those selections will be maintained the next time you start the application. This new feature saves time by retaining your resource selections. The selected resource filter -- All Resources, All Active Resources, or Current Project's Resources -- is also maintained. The state of the resource histogram and spreadsheet can be saved as part of the layout.

Display: Current Project's Resources			Display: Activity Resource Assignments	
Resource ID	Resource Name	Primary Role	Activity ID	Start
Elec	Electrician	Trades	Operator	30-Jun-16 10:00
Elev Inst	Elevator Install	Trades	EC1650	09-Aug-17 08:00
Exc	Excavator	Trades	EC1830	21-Dec-17 08:00
FCarp	Finish Carpenter	Trades	EC1670	22-Aug-17 08:00
Floor	Floor and Carpe	Trades	EC1680	29-Aug-17 13:00
GenLabor	Laborer-Constru	Trades	EC1440	14-Dec-16 13:00
HVAC	HVAC	Trades	EC1340	30-Jun-16 10:00
InsEng	Instrumentation	Engineer	Electrician	17-Jun-16 10:00
ImnWrk	Ironworker	Trades	EC1350	17-Jun-16 10:00
KimP	Paul Kim	Management	EC1660	22-Aug-17 08:00
Operator	Operator	Trades	Elevator Installer	06-Feb-17 13:00
Paint	Painter	Trades	EC1520	06-Feb-17 13:00
Plumb	Plumber	Trades	EC1710	04-Sep-17 13:00
Project Co	Project Controls	Management		
RCarp	Rough Carpent	Trades		

To access this feature:

Update your resources using the Resource Usage Spreadsheet or Resource Usage Profile, and then save your layout or close the application.

64-Bit P6 Professional Installation

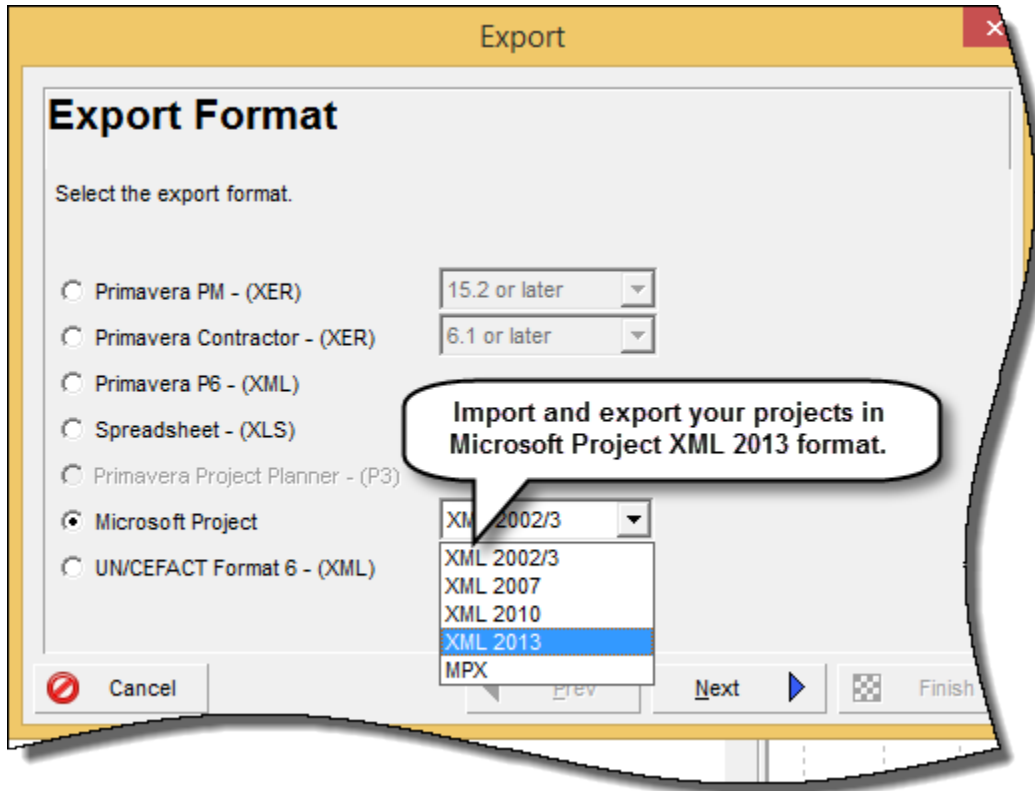
Primavera P6 Professional 15.2 is available as a 64-bit installation. If you are running a 64-bit operating system, choose between a 32-bit or 64-bit version during application installation.

64-bit offers key advantages over the 32-bit version of P6 Professional:

- Handle larger and more complex projects, with faster response time from P6 Professional components.
- An upgrade from the ANSI character set to the Unicode standard enables you to work with multiple languages in P6 Professional at the same time.
- Higher memory ability leads to better performance.
- Crashes due to memory issues are reduced.

Microsoft Project XML 2013 Support

P6 Professional 15.2 enables you to import and export projects in Microsoft Project XML 2013 format. Share project data between P6 and Microsoft Project 2007, 2010, or 2013 by importing and exporting your projects in the corresponding format.

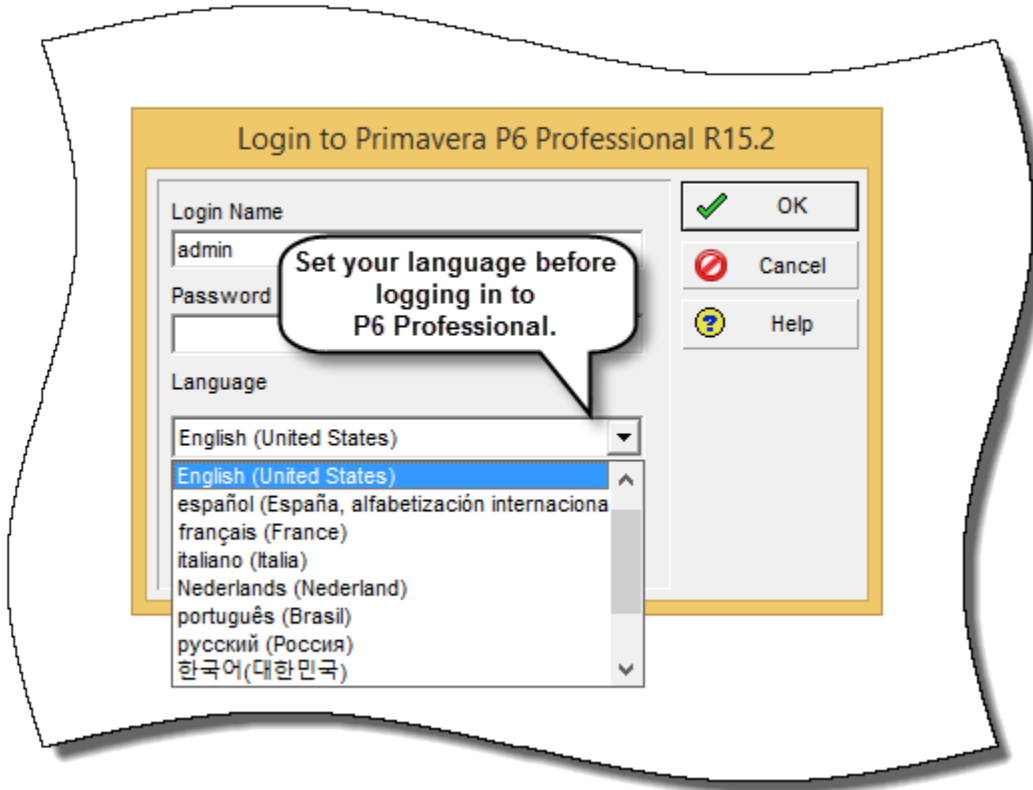


To access this feature:

On the File menu, click Import or Export.

Select Language at Login

Choose your language in the Login dialog box before you log in to P6 Professional 15.2. This enhancement makes it easier to change your language of choice. The Set Language option on the Tools menu is removed from the application.



To access this feature:

In the Login dialog box, choose a language from the list.